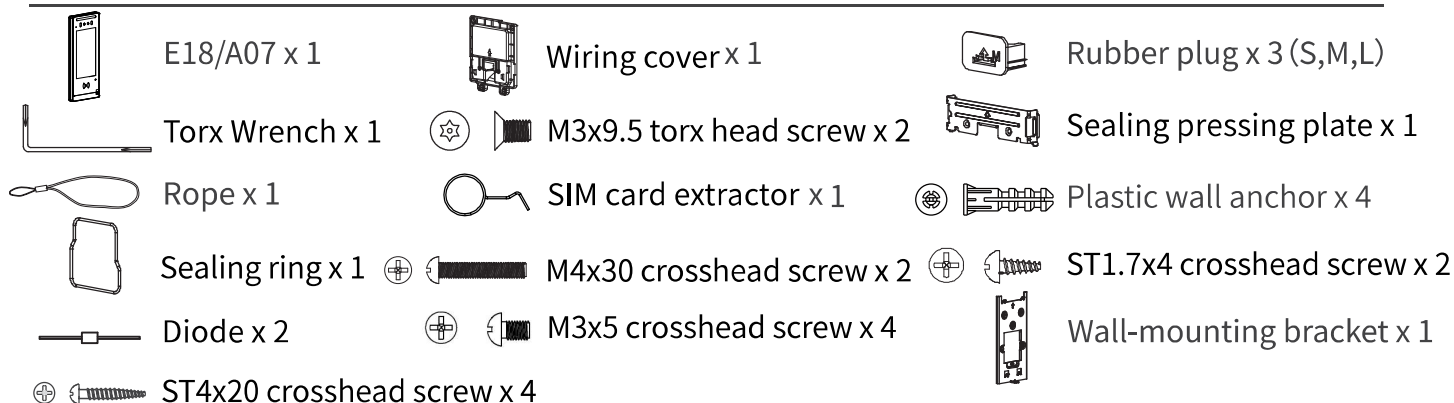


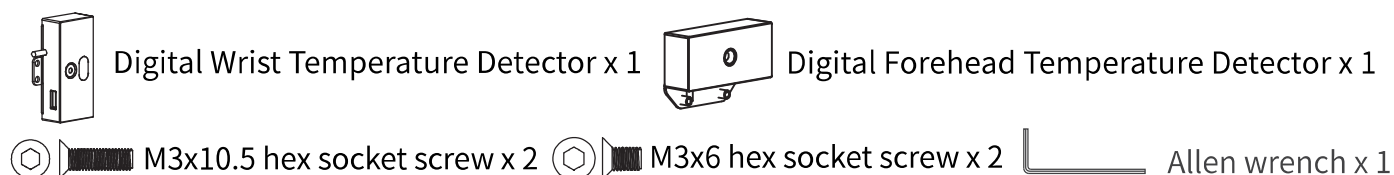
Unpacking

Before you begin using the device, please check the version you got and ensure that the following items are included in the shipped box:

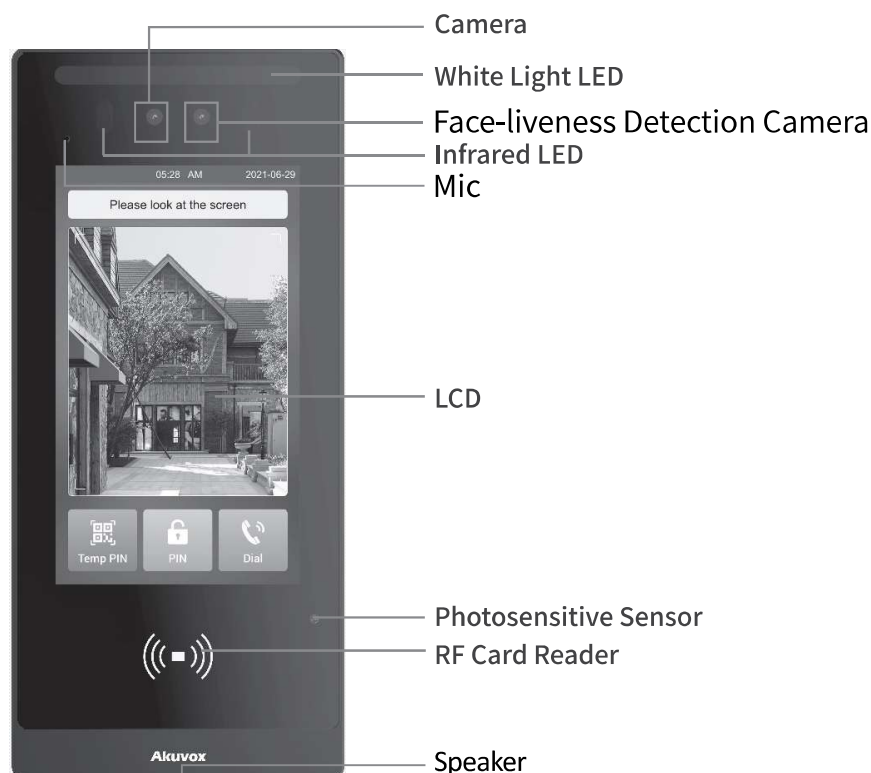
Universal Accessories:



Digital Temperature Detector Accessories (Optional) :



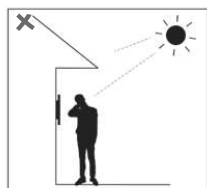
Product Overview



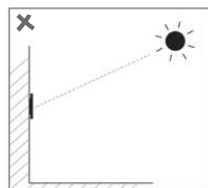
E18/A07

Installation Environment

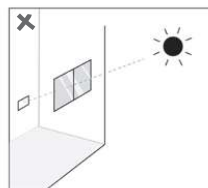
- Please do not place device under direct sunlight, it will bring bad effect or be broken with high temperature.
- If installing the device indoors, please keep device at least 2 meters away from light, and at least 3 meters away from window and door .



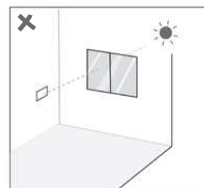
Backlight



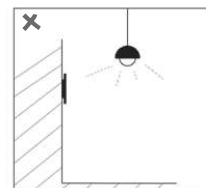
Direct sunlight



Direct sun through window



Indirect sunlight through window



Close to light

Attention:

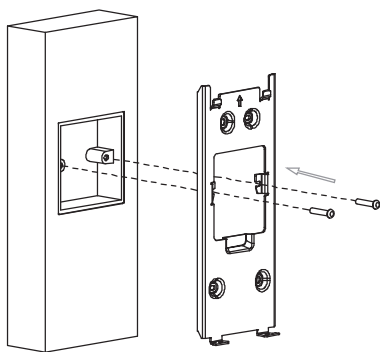
- Biometric recognition product may not be considered 100% to fit in any identification application.
- For higher security purpose or scenario, please set up access authentication combination.

Installation

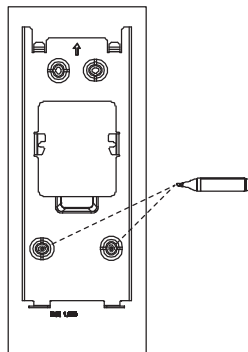
1. Step1: Wall-mounting Bracket Installation

1.1 With embedded one-gang junction box in the wall

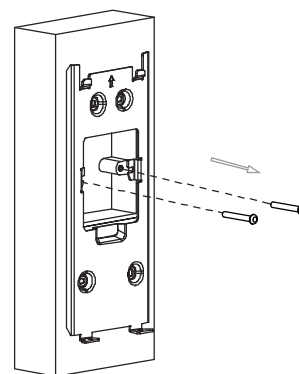
1.1.1 With 86x86 mm embedded junction box in the wall



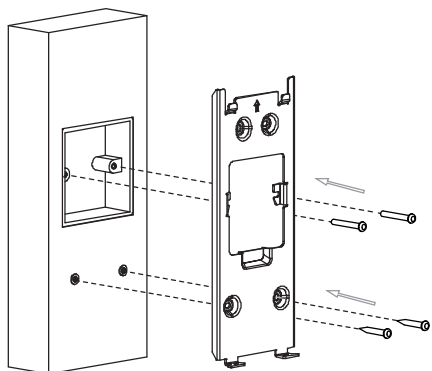
Fix the wall-mounting bracket on the embedded box with two M4x30 crosshead screw.



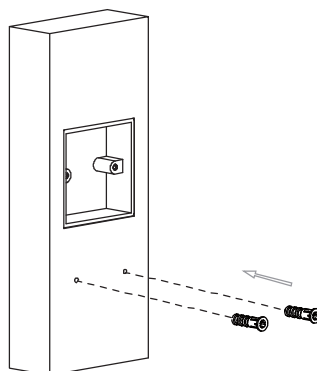
Mark the two positioning holes of the wall-mounting bracket on the wall.



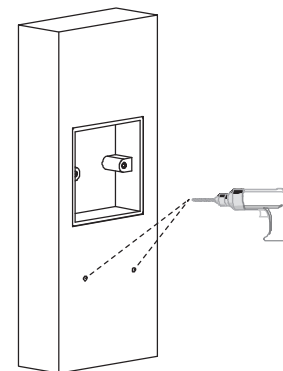
Remove the two M4x30 crosshead screw and take off the wall-mounting bracket.



Fix the wall-mounting bracket with two M4x30 crosshead screw and two ST4x20 crosshead screw.

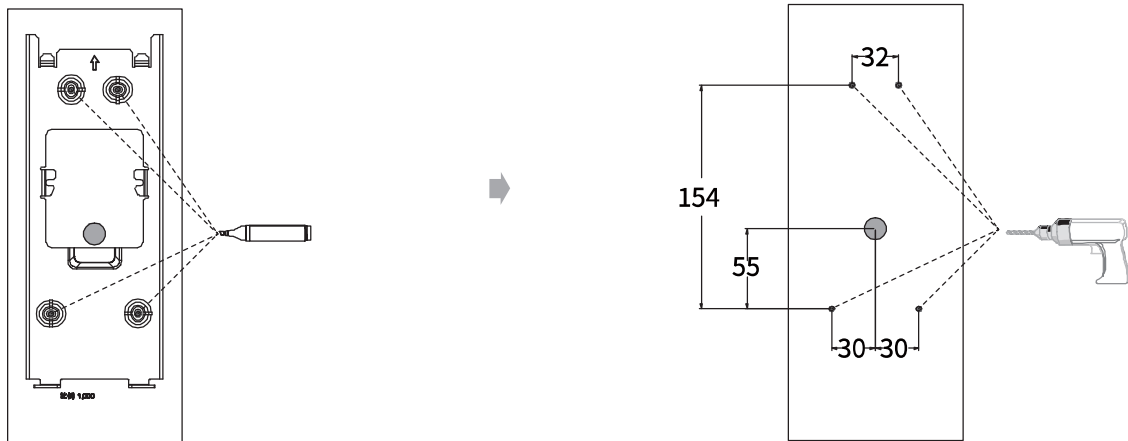


Insert two plastic wall anchors into the two drilled holes.



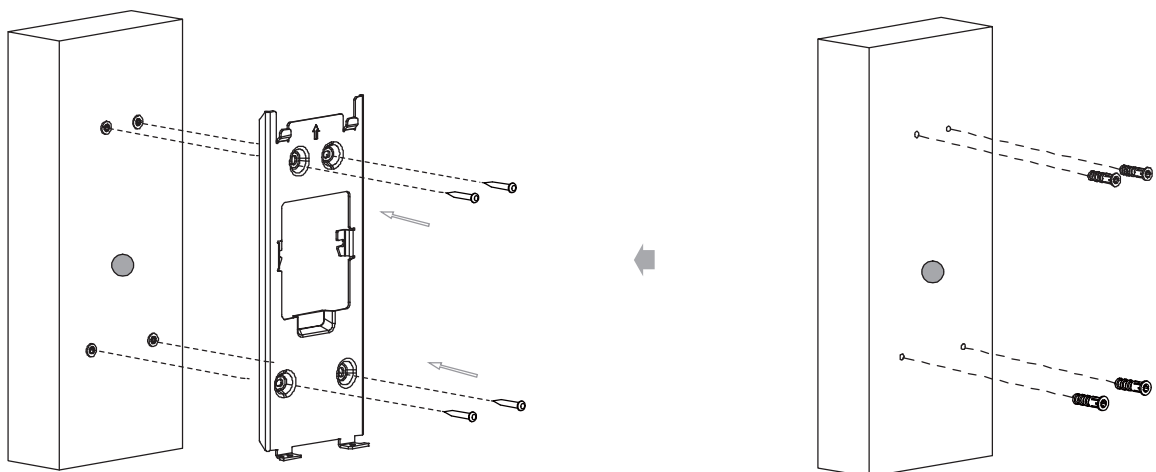
Use a hand drill with 6 mm diameter bit to make two positioning holes with 25 mm in depth in the marked positions.

1.2 Without embedded gang box in the wall



According to the position of the cable, put the wall-mounting bracket closely on to the wall and mark the four positioning holes, while making sure that relative positions between wall-mounting bracket and wire hole are correct.
Note: The positioning holes should be marked in the center of the holes.

Take off the wall-mounting and drill the four marked positioning holes and the wire holes using 6 mm hand drills.

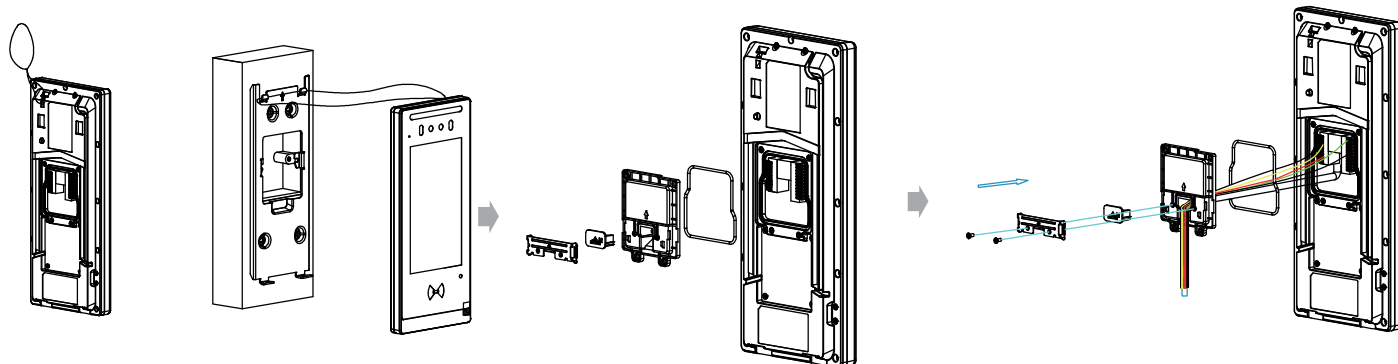


Fix the wall-mounting bracket with four ST4x20 crosshead screw.

Insert four plastic wall anchors into the holes.

2.Step 2: Device Installation

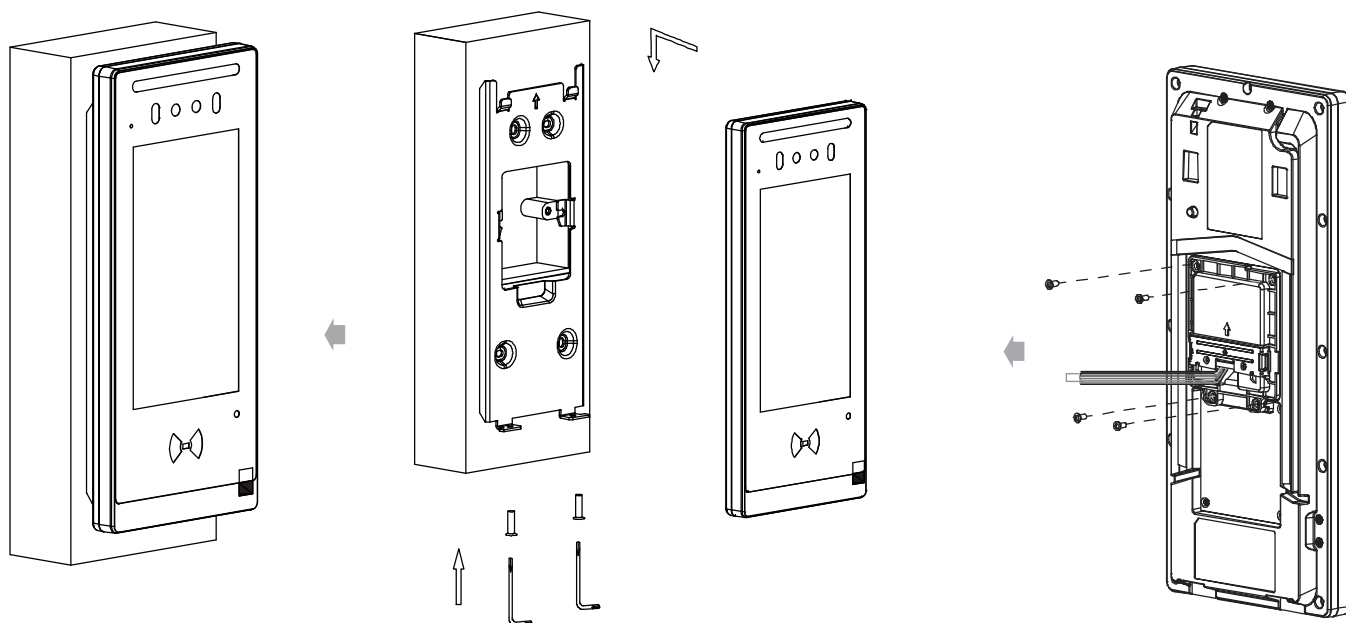
2.1 Device Installation without Digital Forehead or Wrist Temperature Detector



For convenient wiring, hang device on the wall-mounting bracket with rope.

Take out the device along with the wiring cover, sealing pressing plate, rubber plug, sealing ring and corresponding screws.

Lead the wires from the wall-mounting bracket through the square hole on the sealing ring and wiring cover, connecting them to the corresponding interface of the main board, and put sealing ring on the corresponding place, close wiring cover. Then select a suitable size rubber plug to push all the cables into the wiring cover. Fix sealing pressing plate to the wiring cover with two ST1.7x4 crosshead screws.

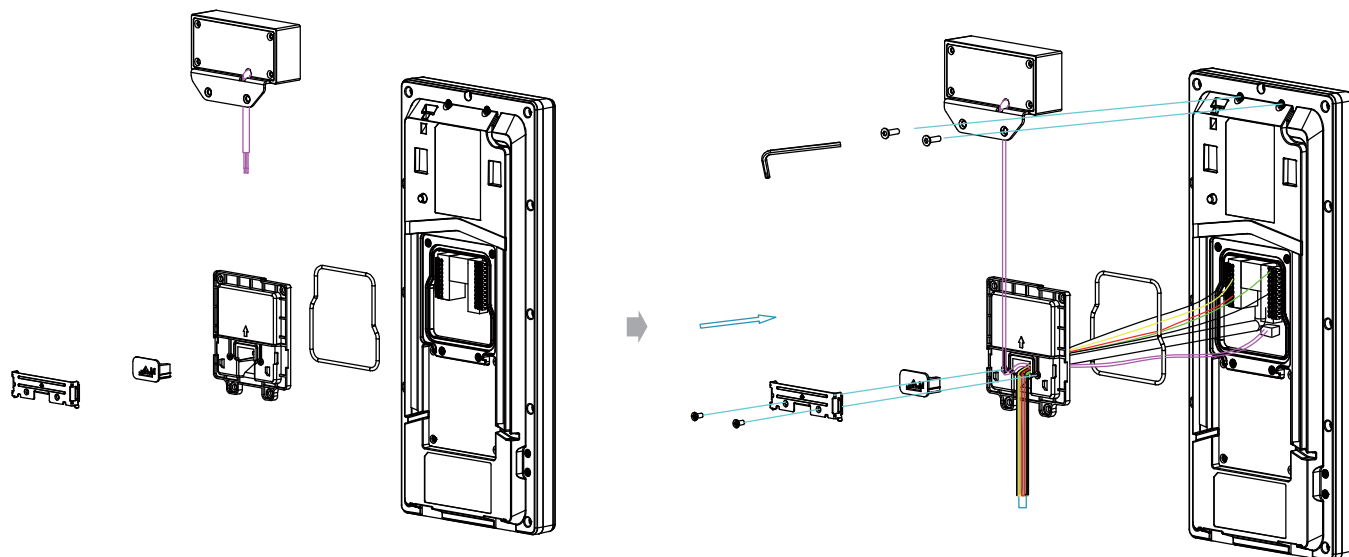


And please remove the protective film. Installation is completed.

Hang the device on to the square hanger on the wall mounting bracket, Installation is completed. pull down the device to make it fall completely on to the square hanger on the wall-mounting bracket, then use the torx wrench attached to tighten the device with 2 M3x9.5 torx head screw.

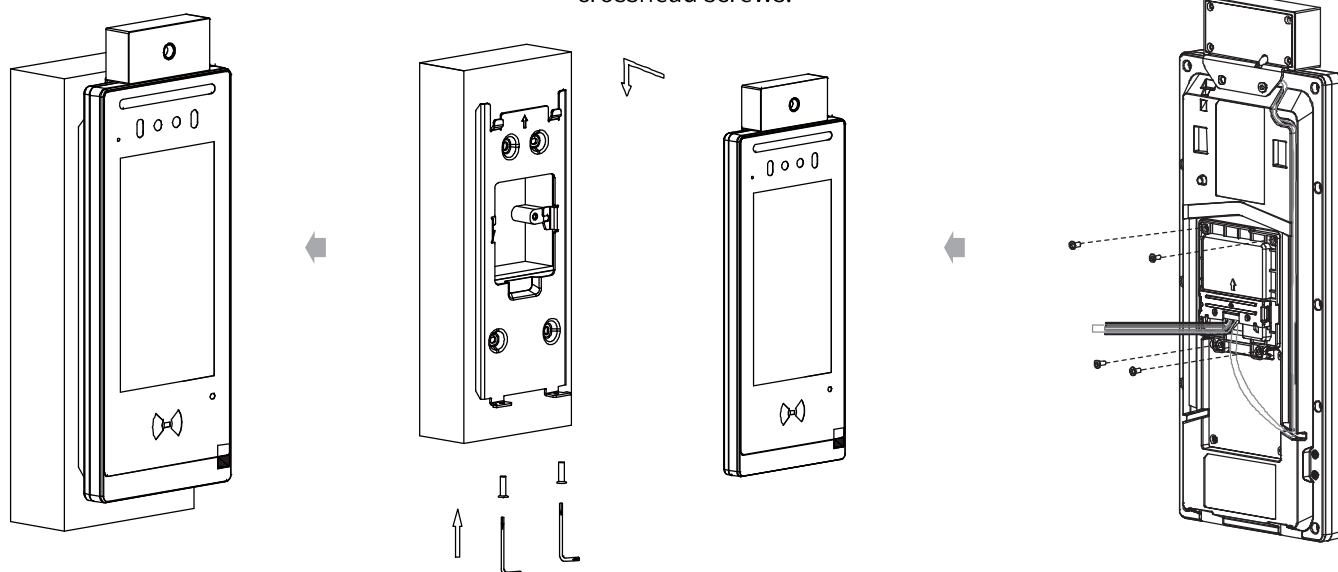
Use four M3x5 crosshead screw to lock the wiring gland.

2.2 Device Installation with Digital Forehead Temperature Detector (Optional)



Take out the device and the digital forehead temperature detector and then take out wiring cover, sealing pressing plate, rubber plug, sealing ring and corresponding screws.
Note: installation step of rope please refer to the first step of 2.1.

Fasten the detector on to the nuts on the device's wiring cover with two M3X10.5 hex socket screws using the allen wrench attached, and lead the wires from the wall-mounting bracket and the detector through the square hole on the sealing ring and wiring cover, connecting them to the corresponding interface of the main board, and put sealing ring on the corresponding place, close wiring cover. Then select a suitable size rubber plug to push all the cables into the wiring cover. Fix sealing pressing plate to the wiring cover with two ST1.7x4 crosshead screws.

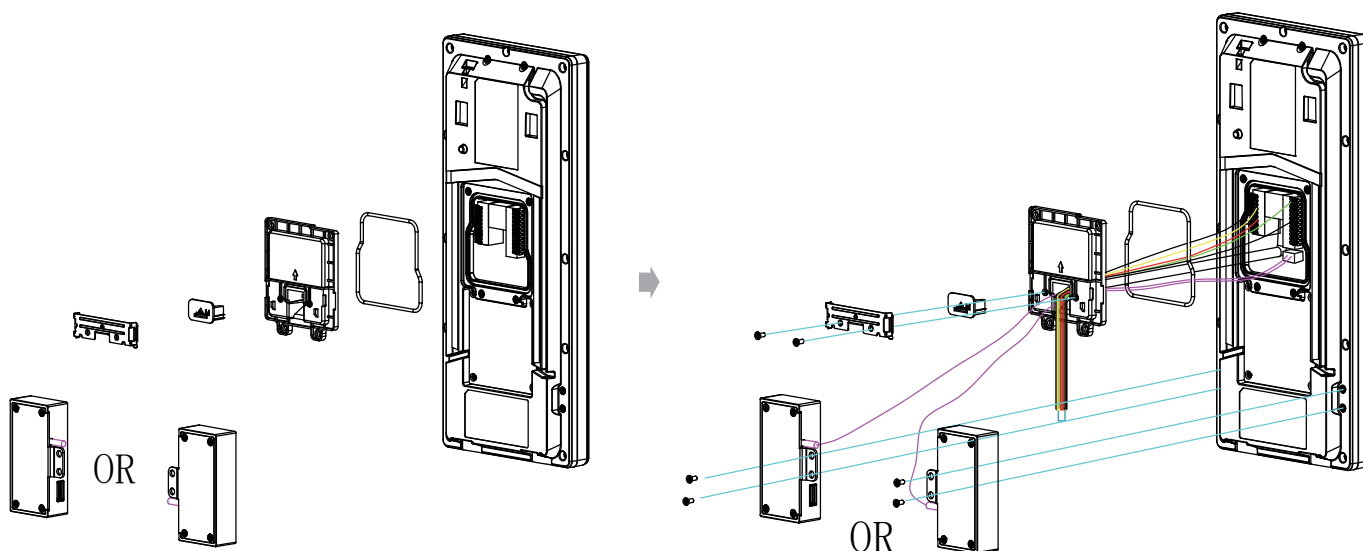


Installation is completed. And please remove the protective film.

Hang the device on to the square hanger on the wall mounting bracket, Installation is completed. pull down the device to make it fall completely on to the square hanger on the wall-mounting bracket, then use the torx wrench attached to tighten the device with 2 M3x9.5 torx head screw.

Use four M3×5 crosshead screws to lock the wiring cover. Arrange and press the connecting wires of the forehead temperature module into the corresponding cable management slot on the wiring cover.

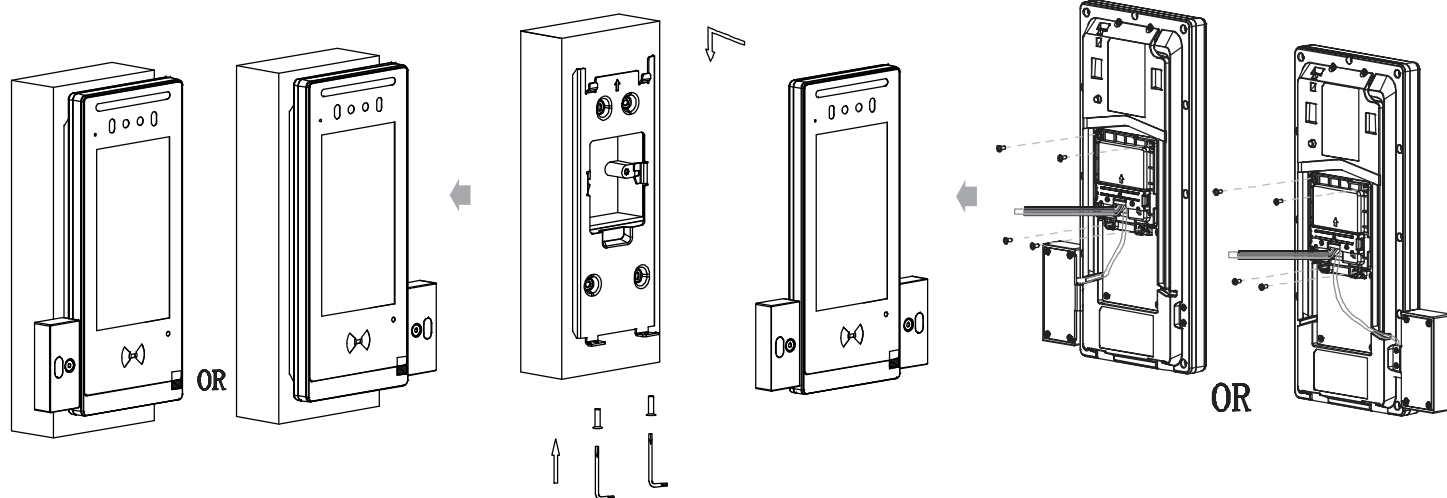
2.3 Device Installation with Digital Wrist Temperature Detector (Optional)



Take out the device and the digital wrist temperature detector and then take out wiring cover, sealing pressing plate, rubber plug, sealing ring and corresponding screws.

Note: installation step of rope please refer to the first step of 2.1.

Use two M3x6 hex socket screws to lock the wrist source module to the nut on the wiring cover of the device. Lead the wires from the wall-mounting bracket and the detector through the square hole on the wiring cover, connecting them to the corresponding interface of the main board, and put sealing ring on the corresponding place, close wiring cover. Then select a suitable size rubber plug to push all the cables into the wiring cover. Fix sealing pressing plate to the wiring cover with two ST1.7x4 crosshead screws.

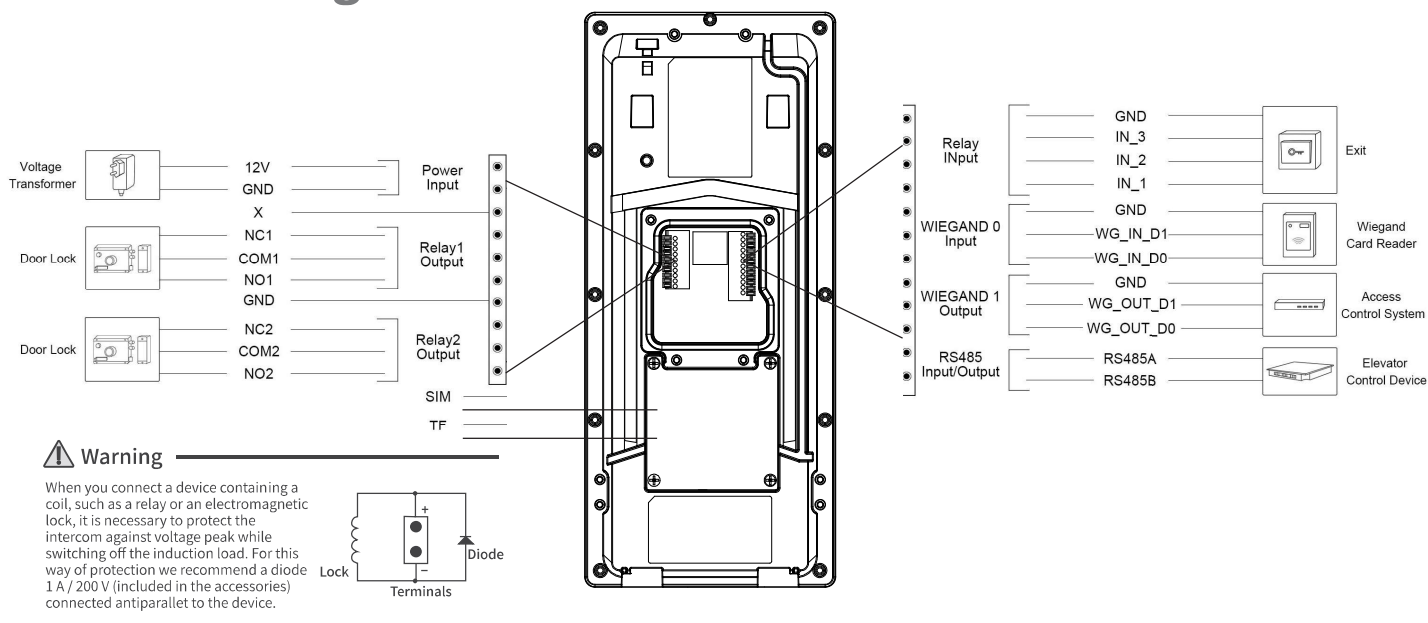


Installation is completed. And please remove the protective film.

Hang the device on to the square hanger on the wall-mounting bracket, Installation is completed. pull down the device to make it fall completely on to the square hanger on the wall-mounting bracket, then use the torx wrench attached to tighten the device with two M3x9.5 torx head screw.

Use four M3x5 crosshead screws to lock the wiring cover. Arrange and press the connecting wires of the wrist temperature module into the corresponding cable management slot on the wiring cover.

Device Wiring

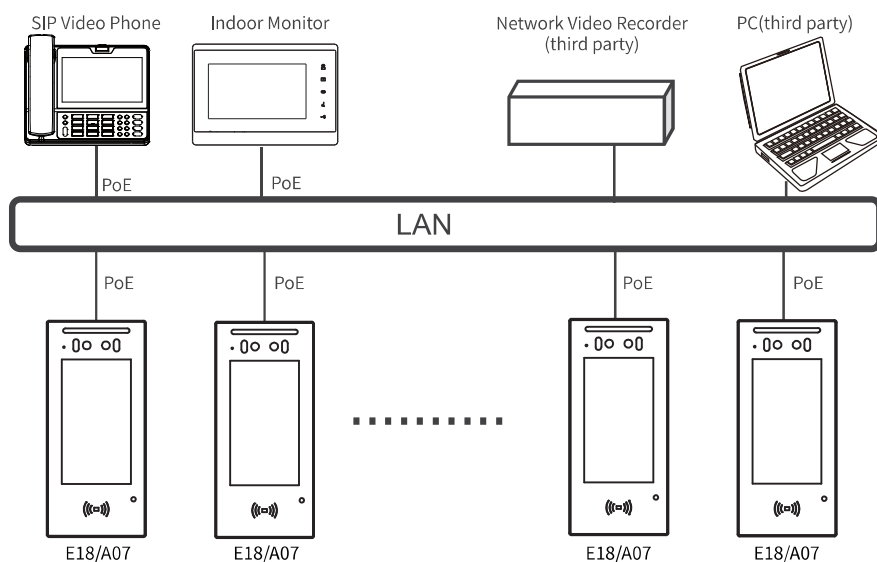


Wire Length & AWG Table

Please follow the properly measured wire gauge/length to install device:

	20 AWG	22 AWG	24 AWG	26 AWG
12V 1A Adapter	≤20m	≤10m	/	/

Application Network Topology



Configuration

- 1.IP address Checking: While device starts up normally, click Search key in the IP Scanner tool to search the IP address.(Please consult Akuvox Technical Team for IP Scanner tool).
- 2.Account Registration:On the web interface, go to the path **Account -> Basic** page to register and fill in the account information. **(please refer to admin guide for more information)**
- 3.DTMF code configuration: On the web interface, go the path: **Access Control->Relay** to set up the DTMF code in the corresponding area.

Operation

Make a call:

Enter the IP or SIP number and press Dial key to make a call. (Only E18 supports call feature.)

Receive a call:

E18 supports Auto Answer by default. Incoming call from indoor device will be answered automatically.

Unlock by DTMF:

During the call, press the corresponding DTMF code from the answer unit to unlock E18/A07 remotely.

Unlock by RF Card:

Place the predefined RF card in the RF reader area to open the door.

Notice Information

Information contained in this document is believed to be accurate and reliable at the time of printing. This document is subject to change without notice, any update to this document can be viewed on Akuvox' s website: <http://www.akuvon.com> © Copyright 2022 Akuvox Ltd. All rights reserved.



AKUVOX (XIAMEN) NETWORKS CO., LTD.
Add.: 10/F, NO.56 GUANRI ROAD, SOFTWARE PARK II, XIAMEN 361009, CHINA
www.akuvon.com



YS18000007